



August 2008

dDN Enterprise

*The Total Package for
db4o Commercial Customers*

To deliver your db4o based software project on time and within budget, db4objects offers the dDN Enterprise, a premium package, specifically designed to provide our commercial users the access to resources they need to successfully bring innovative products with db4o to market - fast!

Priced with an annual flat fee, it provides high priority access to db4objects managerial and technical resources in a way that can be tailored for the customer unique needs.

dDN Enterprise : the Bundle at a Glance

db4o open source object database enables Java and .NET developers to store and retrieve any application object with only one line of code, and providing a powerful native OO alternative or complementary persistence to Relational data models through LINQ and dRS.

World class innovators deploy the db4o database engine at the heart of next generation data-driven devices and applications to cache user-generated and client-side data, enabling compelling new features and achieving unprecedented performance and flexibility.

<p>db4o Developer Network (dDN) Enterprise</p>	<p>The dDN Enterprise subscription includes:</p> <ul style="list-style-type: none"> • Access to db4objects' expert advice with 15 hourly credits/year for live pairing sessions through the XtremeConnect program • Unlimited dDN memberships (including free updates, upgrades, e-mail based support, stable releases) • Exclusive access to "Stable" releases (7.x onwards) • Customized features - options may include Object Manager Enterprise tool with Eclipse or Visual Studio plugins, a discounted set of db4o Runtime Licenses (dRT), free db4o Runtime Licenses for trial versions <p>To request more information and to tailor your package,talk with your Account Manager,</p>	<p><i>Packages starting at US\$18,000</i></p>
-------------------------------------------------------	--------------------------------------------------------------------------------------------------------------------------------------------------------------------------------------------------------------------------------------------------------------------------------------------------------------------------------------------------------------------------------------------------------------------------------------------------------------------------------------------------------------------------------------------------------------------------------------------------------------------------------------------------------------------------------------------------------------------------------------------------------	---------------------------------------------------

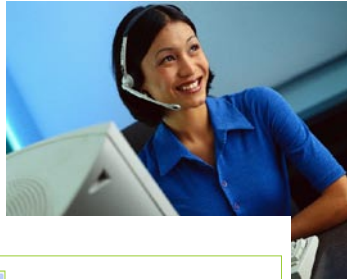


XtremeConnect – Live Pairing Sessions with db4o Experts

XtremeConnect is designed to meet the growing demand of companies with cutting edge Java and .NET projects which want to leverage db4o's popular open source database to provide competitive new features and services while mitigating the technology risks through investment in expert support.

XtremeConnect allows developers to directly connect with a db4o expert for a remote pairing session that enables joint design reviews, debugging, system integration support, or performance optimization.

db4objects has pioneered the convergence of Extreme Programming (XP) and Open Source development processes by creating a unique virtual pair programming technique that works with geographically disparate teams. XtremeConnect makes this process innovation available to customers and their specific projects, providing for an efficient, lean, and highly specialized support offer unlike any other.



New Peer Request

Peer

Expertise Level

Language

Pairing Session Topic

Timing

Your Time Zone



"I would definitely endorse db4o's use due to its performance, both in terms of memory overhead and transactional latency; its scalability in terms of how many items you can put in the database; and its solid reliability.

But the overall endorsement comes down to db4o's support, because if you hit a snag, the db4o team works with you to overcome it.

That's solid customer support!"

*Bret Savage
Chief Architect for Mirra
Seagate*

How it Works

From the db4objects Customer Portal (<https://customer.db4o.com>) or from within ObjectManager Enterprise the developer can schedule and request a pairing session with just a few clicks.

XtremeConnect allows to specify the nature of the request, select the preferred expertise level, attach technical information, share preferences for timing and language, and disclose the access information for virtual pairing via voice (regular phone or Skype) and desktop sharing (Windows Remote Assistance, Windows Remote Desktop, or free, open source VNC).

Within 24 hours a db4objects dispatcher will assign an appropriate expert peer and propose a pairing time, allowing the developer to connect directly with their peer for direct interaction regarding that session.

During the actual session, desktop sharing ensures optimum productivity as both parties share the original development and system environment while working on the live code and communicating by voice. After closing a session, hourly credits are applied for the session's preparation, logistics, the actual pairing session, and eventual follow up work. Subsequent sessions will be scheduled with a separate session request.

Every dDN Enterprise subscription preloads XtremeConnect with 15 hours of core engineer time. Upon expiration of credits, additional sessions can be acquired.



ObjectManager Enterprise

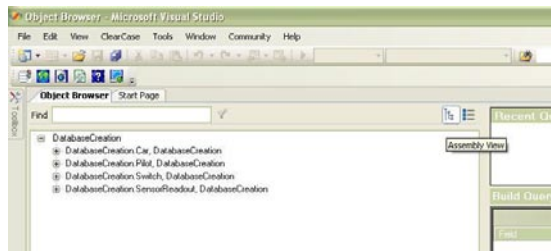
ObjectManager Enterprise (OME) is a new tool available exclusively for dDN Enterprise subscribers. OME comes as a plug in for Visual Studio or Eclipse or as a standalone.

OME is designed for db4o database browsing and maintenance and includes:

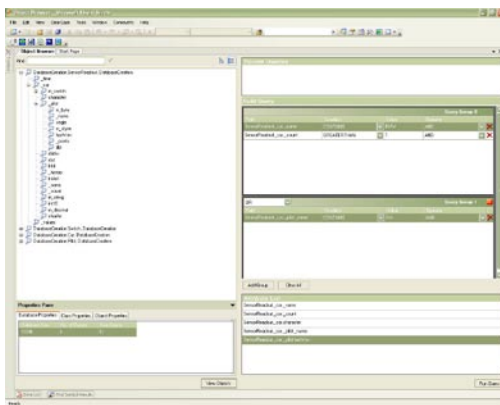
- Classes view: flat and hierarchical filtered structure of persistent classes
- Single class detailed view: fields, base- and subclasses and interfaces, statistics (number of objects in the database)
- Single object detailed tree view (field objects as nodes)
- Query Builder: allows to create complex queries using object fields on different levels of the hierarchy joined together with logical operators
- Multiple objects list view as a query result
- History view: recent queries or objects
- Favorites view: user-defined frequently used queries or objects (coming)
- Access to the XtremeConnect session scheduler and the dDN support case tracker



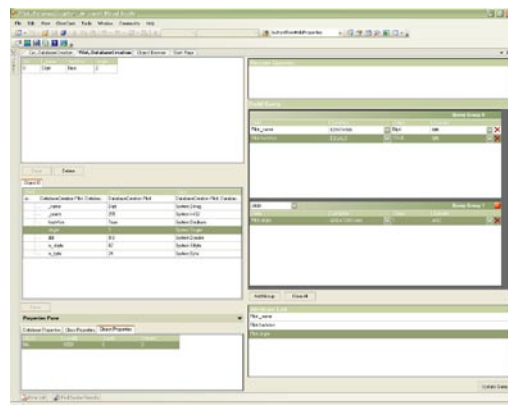
DB Connect: User can select from a list of recent connections, browse to open a file or connect to a running database over the network.



Assembly View: On opening a database, user see a list of classes saved in the database. It is possible to choose between an Assembly View or a Class View. At the bottom, the Properties Pane shows database size, free space, and number of classes whose objects are saved in the database.



Query Builder: A query is formed by dragging attributes from the tree view to Build Query pane. Attributes are constrained by providing Conditions and Values. Each Query Group indicates a parenthesized logical expression. Attribute List is also formed by dragging and dropping attributes that the user wishes to see in the results.



Update Results with Attribute Changes: Shows results for a query on class Pilot. Table view shows same columns as in the Attribute List, details of the selected object are seen in the tree grid view below it. User can expand and navigate the reference hierarchy of the object. Object properties (uuid, localID, version etc) are in the Properties Pane.

Get a demo video at www.db4o.com/about/productinformation/dom!



dRT Runtime Licenses

dDN Enterprise may be customized to include a specified number of non-GPL, commercial runtime licenses (dRT) for redistribution of db4o inside and outside of the organization. Unless exceeding the thresholds listed below, dDN Enterprise customers are not required to report on shipment or consumption of licenses as they are with a traditional OEM redistribution agreement.

In addition, an unlimited number of free dRT licenses (all editions) are included for distribution with trial versions of customer's product.

For purchases of dRT licenses beyond these thresholds, the customer is able to lock in a volume based unit price for the duration of their subscription. This option allows to reorder at any time at a guaranteed price, ensuring budget conformity and viable economics.

<p>dRT (all editions) – Trial</p> <p>Distribution licenses for trial versions of customer's product. One cannot charge for either the trial product or complementary services and need to render it unusable for production purposes.</p>	<p>Unlimited units</p>
<p>dRT In-process Edition</p> <p>db4o In-Process runs in the same process space as the application and supports all functions except the option to connect to a database server with Db4o*.openClient (as opposed to Db4o*.openFile)</p>	<p>500 units</p>
<p>OR dRT Client/Server Edition</p> <p>db4o Client/Server typically runs as a separate process from the application supporting one or more client connections over the network and with all functions as specified. db4o Client/Server is licensed for an unlimited number of database connections.</p>	<p>32 units</p>
<p>OR dRT Micro Edition</p> <p>The current version of the db4o database engine software solely for the J2ME and Microsoft .NET CompactFramework platforms. db4o Micro supports all functions as specified except the option to connect to a database server with Db4o*.openClient (as opposed to Db4o*.openFile).</p>	<p>1,950 units</p>
<p>AND dRS Option</p> <p>dRS provides the ability to synchronize data between db4o databases as well as between db4o and relational database systems with all functions as specified, excluding the license for Hibernate.</p>	<p>reduces above thresholds by 1/3</p>
<p>Updates and Upgrades</p> <p>On shipped and unshipped runtime license units as listed above.</p>	<p>Unlimited for the duration of the subscription</p>

Exclusive Access to db4o Stable Versions

db4o is shipped as

- A. Continuous build (alpha) version for 2 hourly improvements in the current development stream
- B. Development (beta) version for testing new features
- C. Production version for developing products (general download)
- D. Stable version for shipment with commercial grade products

A-C are dual licensed both under the General Public License (GPL) as well under the commercial db4o Runtime License (dRT).

With db4o version 7.0 and higher, stable versions (D) are only licensed under the dRT and to subscribers of the commercial db4o Developer Network (dDN), including dDN Enterprise.



dDN: Support Cases with 24 hours Response Guarantee – 24/7

The dDN Support Case management, accessible from the personalized db4objects Customer Portal (<https://customer.db4o.com>) or from within the ObjectManager Enterprise, gives developers the opportunity to file and track their support cases -- 24/7.

db4objects' support team will immediately review filed cases and initiate the appropriate action to reply and, if possible, resolve the case within 24 hours or less!

Case tracking numbers, an automated and sophisticated escalation process along with a case age measurement infrastructure ensures a quick response limiting production delays.

```

01 private static void
02     new File(FILENAME)
03     ObjectContainer
04     try {
05         Pilot pilot =
06         container.set(
07         pilot = new Pi
08         container.set(
09     } finally {
10         container.close
11     }
12 }
    
```

New Support Case

Please use this form to submit any db4o related support cases. We will answer within 24 hours.

Subject:

Type:

Product:

Version:

Description:

db4objects

Home

XtremeConnect

Support Cases

Runtime Usage

Contact Details

User Profile

Logout

Support Cases

Here is an overview over all your historic support cases. To file a new case simply click the button below and follow the instructions. We will reply to you within 24 hours.

Number	Opened	Subject	Status	
00001343	11/12/2007	A question re DEF	Escalated	<input type="button" value="Read"/>
00001347	11/17/2007	Applying a translator to all classes	New	<input type="button" value="Read"/>
00001342	11/12/2007	I have an issue with ABC	Closed	<input type="button" value="Read"/>

© 2007 db4objects, Inc.



dDN Enterprise Options for the Entire Product Life Cycle!

	DB Evaluation	Development	Quality Assurance	Shipment	Updates
XtremeConnect Pairing Session	Introduction Training	Design Reviews	Debugging		Update Support
ObjectManager Enterprise tool	Developer tool	Developer tool	Developer tool		Developer tool
Commercial licenses				Free trial licenses + up to 500 shipments/yr. Price lock in for excess shipments	
dDN Portal	Log support cases	Log support cases	Log support cases		Log support cases
Updates/Upgrades		Free Updates/Upgrades and fixes	Free Updates/Upgrades and fixes		Free Updates/Upgrades
Access to stable versions			Exclusive access to stable version	Exclusive access to stable version	

Special Commercial Arrangements

Upgrade: Upgrades from an existing, basic dDN membership, may be eligible for a partial refund and discounts of up to 30% – on orders placed and shipped prior to 12/31/2007.

Multiple seats: Volume discounts are available for dDN Enterprise subscriptions for multiple named developers.

Trial and 30 day cancellation policy: dDN Enterprise is available with a 30 day cancellation policy which allows for a risk free trial. If you decide to discontinue your subscription to dDN Enterprise, you will only be charged 1/12 of the total fee.

Sales Contact

Submit inquiries for dDN Enterprise:

<http://www.db4o.com/about/productinformation/packages/inquiry.aspx>

Email:sales@db4o.com

Corporate Headquarters:

db4objects, Inc, 1900 S Norfolk Street, Suite 350, San Mateo, CA 94403, United States

Phone: +1 (650) 577 2340 or Fax (+1) 650 240-0431

Website: www.db4o.com